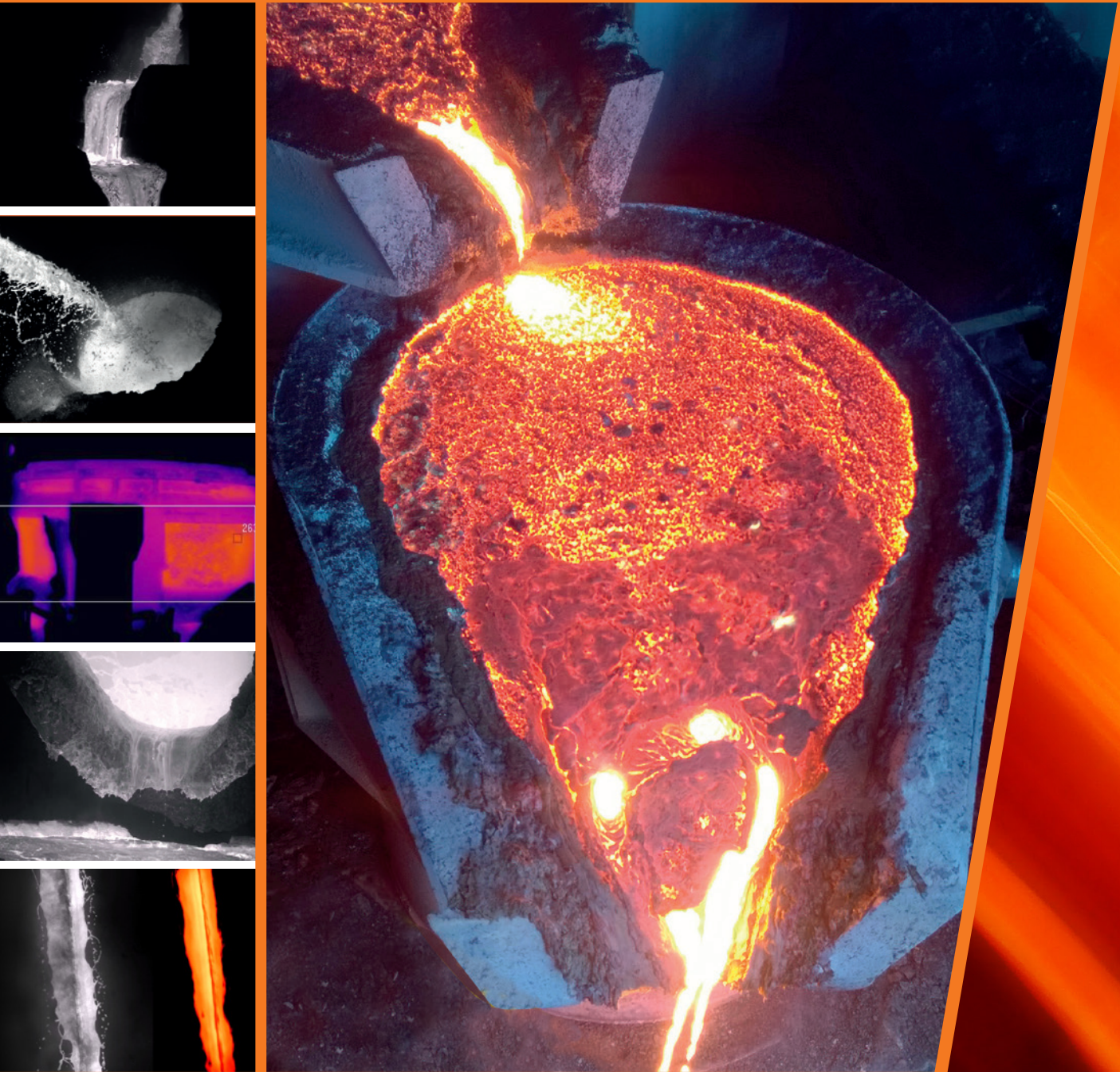


RevealTAP

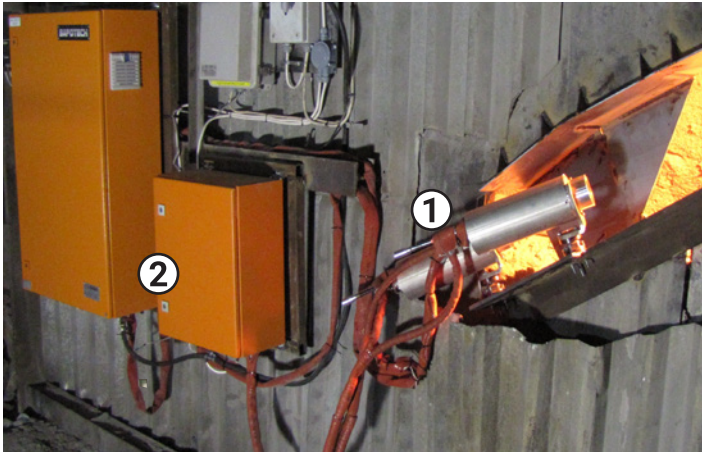
Molten Metal Monitoring



SAPOTECH

*See more.
Know more.
Benefit more.*

WHAT IS **Reveal TAP**?



① Imaging units

② Control cabinets

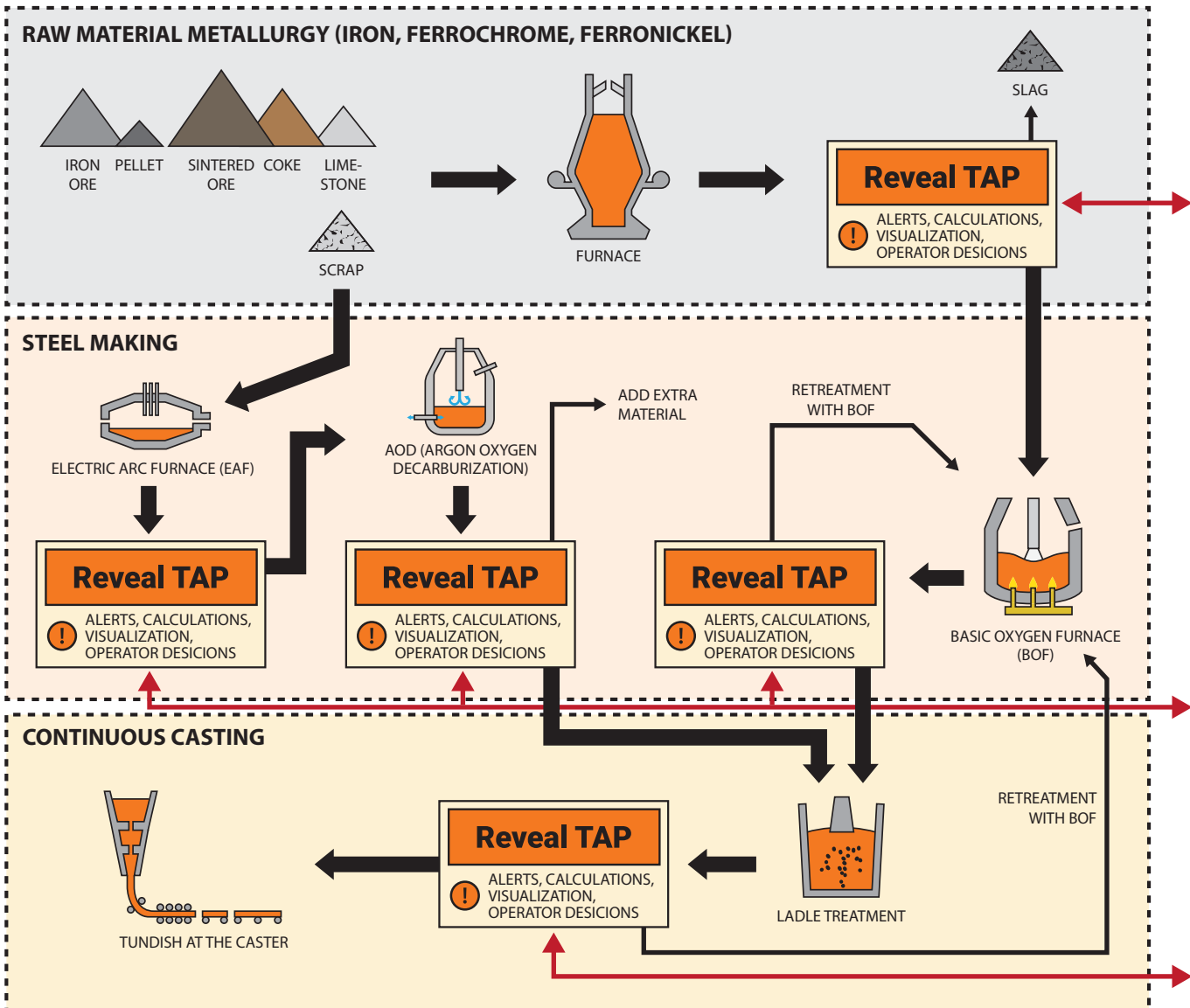
Reveal TAP is the complete solution for monitoring, documenting and analysing processes involving molten metals. Its hardware consists of different sensors and imaging technologies combined, such as high speed monochrome, infrared and spectral sensors. Our software combines data from all sensors, performs algorithmic process analysis and provides real time numeric and visual feedback to the operators to solve their specific challenges.

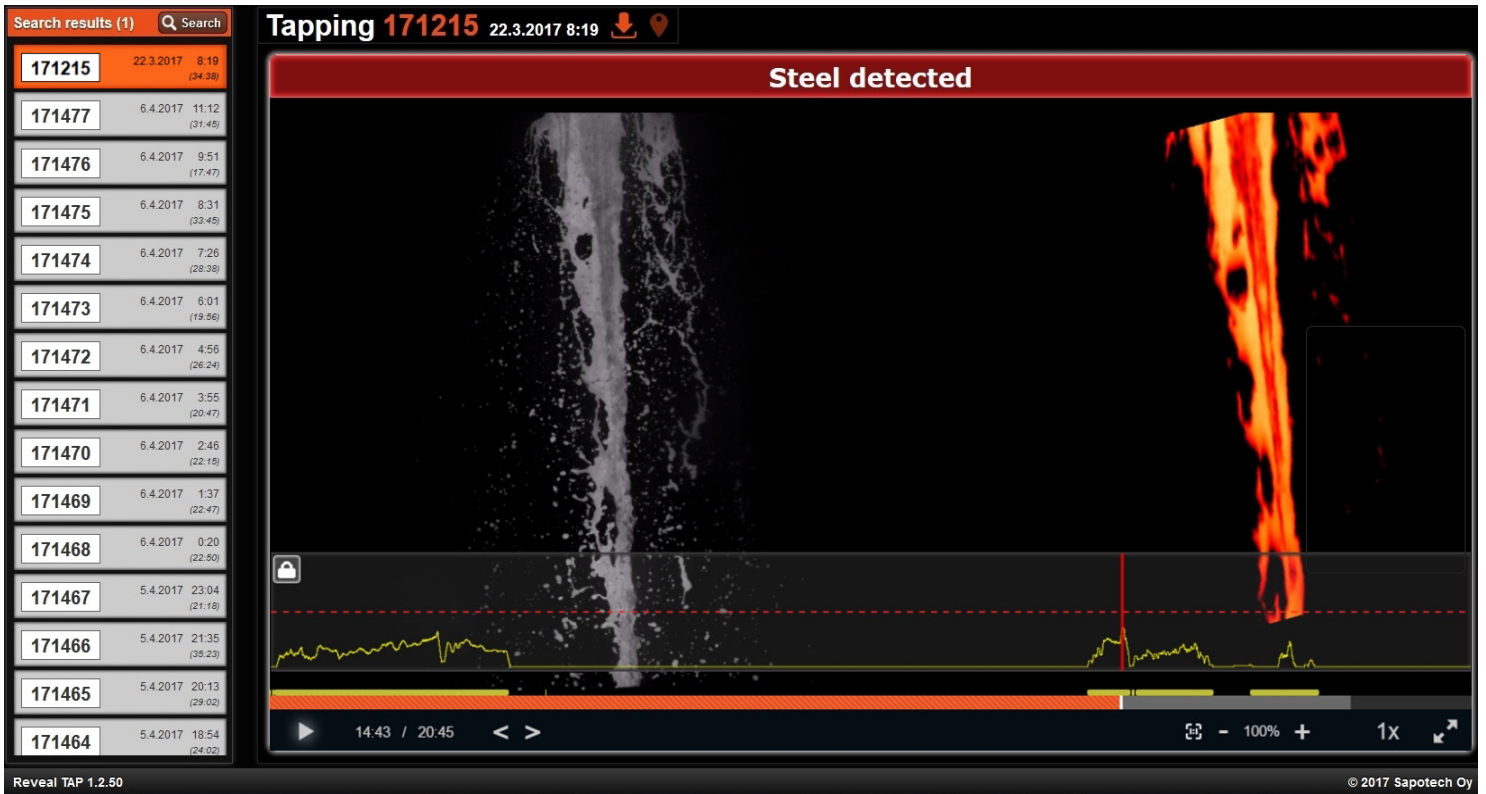
Reveal TAP solution can be flexibly customized to specific issues such as:

- Monitoring of tapping, de-slagging, gas flow purging, material feeding, foaming
- Installation at electric arc furnaces, converters, ladles, ladle stations, skimming stations

Everything is visualized in real time and in extreme detail

Efficient production from the raw material to the continuous casting





Reveal TAP user interface

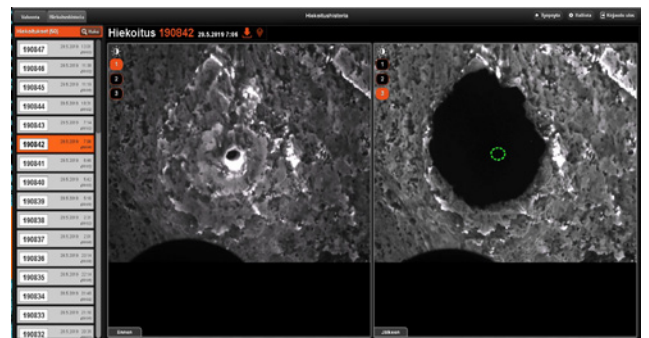
Reveal TAP SOLUTIONS

- Metal/slag detection for AOD/EAF/BOF
- Hot spot monitoring for furnaces/ladles
- Sand addition monitoring for ladles
- Monitoring slag skimming
- Electrode wear monitoring
- Tundish and mould monitoring

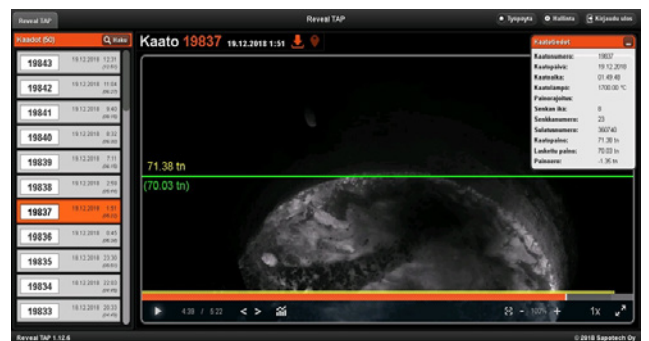
Reveal TAP BENEFITS

- Monitoring in real time and in high detail
- Intelligent algorithms and alerts giving more information and improving process control
- Immediate feedback about process quality
- Early detection of possible process deviations
- Objective inspection and analysis
- Systematic documentation for process tracking and optimization
- Improved worker safety

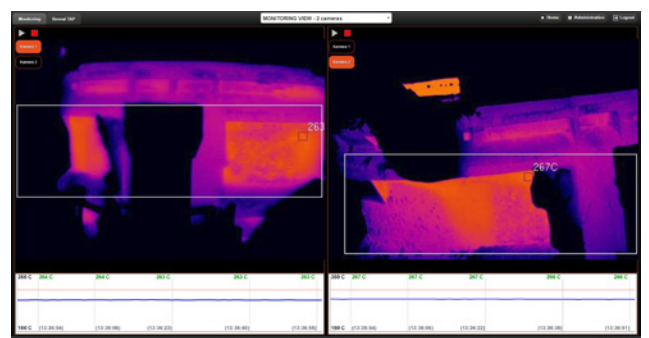
Sand filling monitoring



Weight monitoring



Thermal monitoring





**Fast & Easy
to install**

**High quality imaging
(monochrome / IR / spectral)**

User friendly

**Easy decision
making**

SAPOTECH

Based in Finland, Sapotech offers breakthrough solutions for online monitoring and quality assessment of all processes in the metal industry. Within a very short time, and with all the benefits of industrial internet, customized solutions can be supplied according to our customers' specific needs.

Our technology is widely used in the steel, aluminum, ferrochromium, nickel and copper industries. We also deal with monitoring of metal flows and inspection of refractories at high temperatures. All our solutions are designed to be compact, easy to maintain and to fulfill specific process requirements cost-efficiently and with a short payback time.

ONE PLATFORM - MULTIPLE PRODUCTS - COUNTLESS SOLUTIONS

CONTACT

sales@sapotech.fi

www.sapotech.fi